

Digital radius meter and diameter DIACHECK-CT series

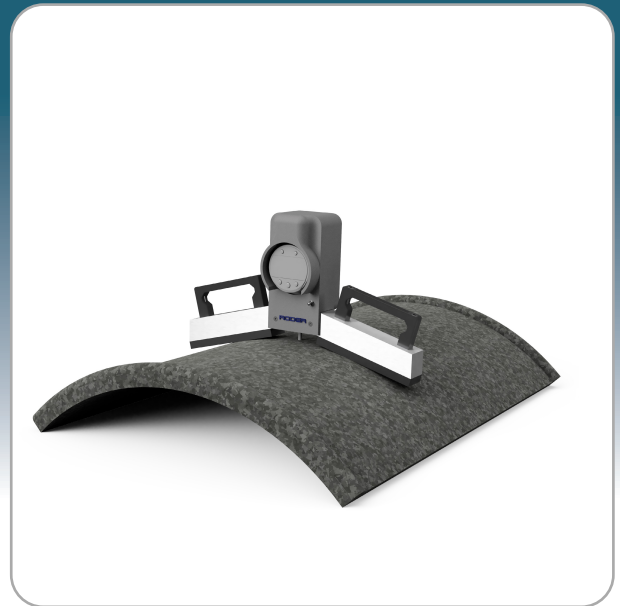
The digital radius and diameter gauge series DIACHECK-CT allows direct and instantaneous reading of internal or external radius or diameters in the range between 100 and 10000 mm.

This radius gauge allows direct and instantaneous reading of inside or outside radius values for a wide range of curves, profiles, diameters and cylindrical objects.

Convenient : there is no need to cut out samples to find out the radius of a curve, or to remove the piece from the machine to measure it and not even to extract the part from its installation location (for example underground pipes, installed tanks, positioned and fixed calenders)

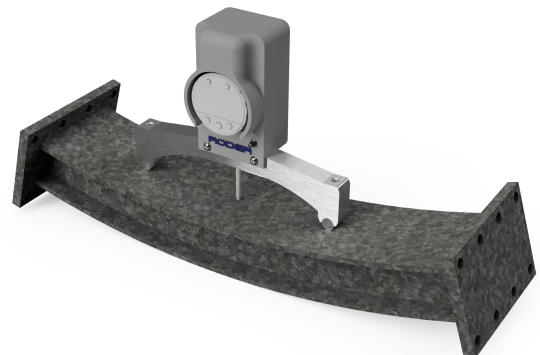
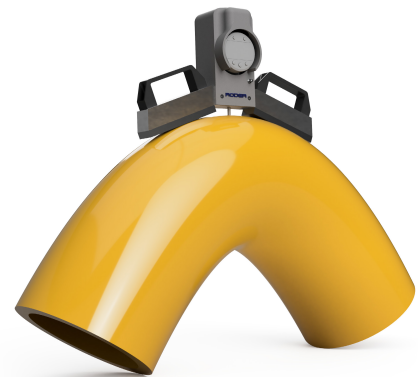
Easy : It's easy to use and the measurement process is fast. Simply place the gauge inside or outside the curve to automatically obtain the value of the radius of curvature or the diameter of the object.

Practical : it is small and light and can be easily used for different measurements by simply changing the measuring arch.



Features

- Digital display with battery power
- Bluetooth connection with special accessory
- Front button for data transmission to remote system
- Two units of measurement: mm and inch
- External or internal radius measurement
- Possibility of using the instrument for flatness or depth measurements
- Easily programmable
- Availability of zeroing and calibration tools

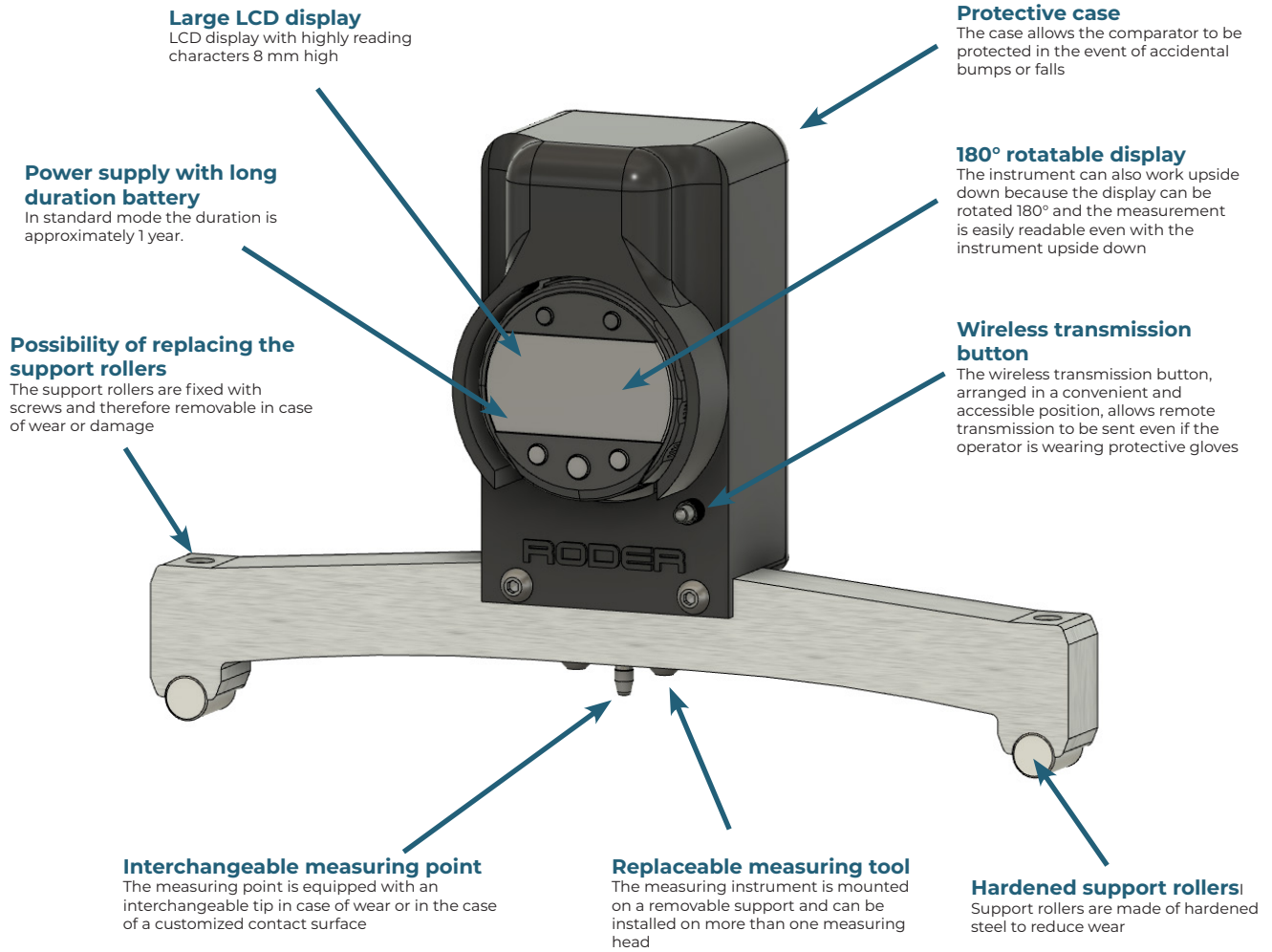


*Radius and profile
measurement made
easy !!!*

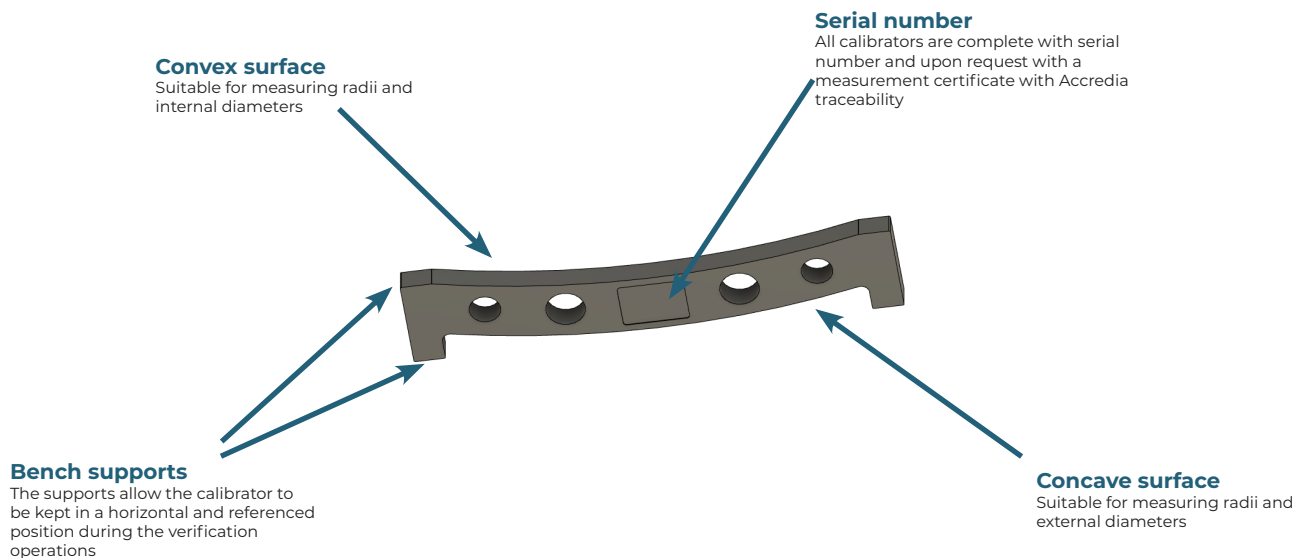


Why choose a DIACHECK-CT meter?

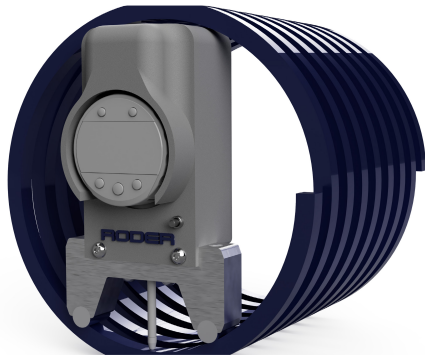
Main characteristics of the DIACHECK-CT series



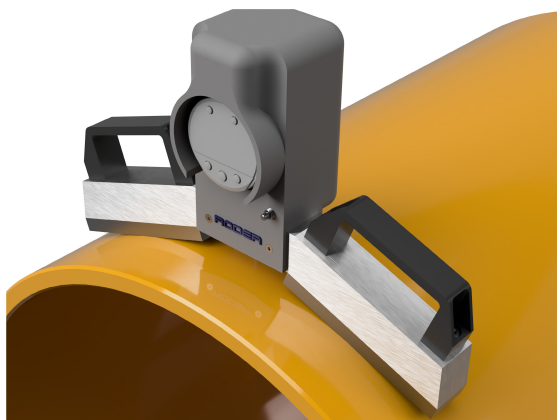
Calibrators for DIACHECK CT



Typical applications



- Bending **radius measurement** of bent pipes.
 - External **diameter measurement** of pipes and ducts (even if already positioned or buried).
 - Internal diameter measurement of centring and **large pipes**.
 - Bending **radius measurement of curved sheets**.
- Measurement of the **diameter of large tanks** or silos, both during the construction of the individual parts and during assembly and positioning.
 - Measurement of the diameter, angle and radius of **curvature of pipes, tanks, centring, plates**.
 - Measurement of the radius of **curvature of molded or thermoformed plastic parts**.
 - Measurement of the radius of curvature of **rolled and curved metal sheets**.

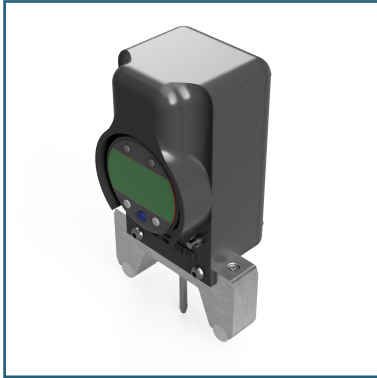


- Measurement of the shape of **pressed parts or curved sheets** for the furniture sector.
- Measurement of the **curvature of glass** or artefacts with complex geometric shapes.
- Verification and comparison of the **mathematical model of geometric shapes** produced by CNC.
- **Checking the curvature of pipes** and fittings.
- Measurement of the **curvature of glazing** and coupling profiles.

- Measurement of the radius of curvature of bodywork and **sheet metal parts for the automotive sector.**
- Measurement of the **diameter of ribs for tunnels or for constructions.**
- Measurement of the radius of **curvature of cement and concrete products.**
- Measurement of the radius of curvature or the diameter of parts intended for the **naval sector or the construction of large structures.**
- Measurement of the bending **radius of profiles during processing** on profile bending machines, bending machines and forming systems.
- Measurement of pipe **diameter and coupling taper** for the hydrocarbon, water and liquid transport sector.
- Measurement of the degree of taper of **mating flanges for pipes or tanks.**
- Measurement of the diameter or **radius of curvature of calendered or welded products.**
- Verify correct fit of parts during **mating and sealing.**



Tools and accessories for outside / inside diameters and radii



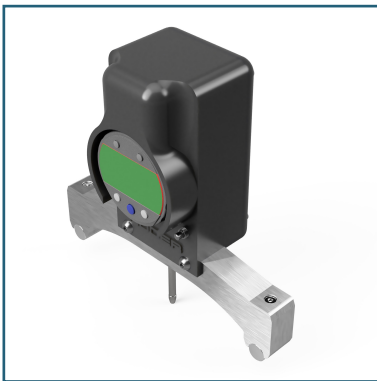
DIACHECK-CT series measuring instrument for radii and diameters with roller support and 80 mm center distance

ITEM : 10-06-68
PRODUCT CODE : DIACHECK-CT-80C

Measuring instrument composed of :

- DIACHECK-ST-25 electronic controller with digital comparator
- Support base with rollers (suitable for both internal and external measurements) with 80 mm center distance between the rollers

Minimum measurable external diameter: 110 mm
 Minimum measurable internal diameter: 180 mm
 Maximum measurable external diameter: 500 mm (recommended*)
 Maximum measurable internal diameter: 500 mm (recommended*)



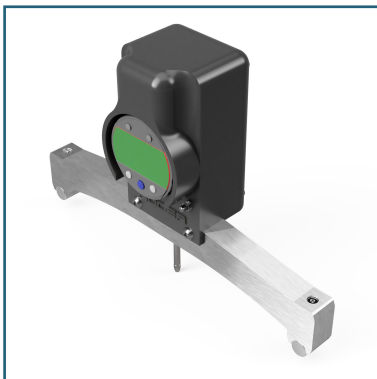
DIACHECK-CT series measuring instrument for radii and diameters with roller support and 160 mm center distance

ITEM : 10-06-69
PRODUCT CODE : DIACHECK-CT-160C

Measuring instrument composed of :

- DIACHECK-ST-25 electronic controller with digital comparator
- Support base with rollers (suitable for both internal and external measurements) with 160 mm center distance between the rollers

Minimum measurable external diameter: 520 mm
 Minimum measurable internal diameter: 520 mm
 Maximum measurable external diameter: 1500 mm (recommended*)
 Maximum measurable internal diameter: 1500 mm (recommended*)



DIACHECK-CT series measuring instrument for radii and diameters with roller support and 240 mm center distance

ITEM : 10-06-70
PRODUCT CODE : DIACHECK-CT-240C

Measuring instrument composed of :

- DIACHECK-ST-25 electronic controller with digital comparator
- Support base with rollers (suitable for both internal and external measurements) with 240 mm center distance between the rollers

Minimum measurable external diameter: 1150 mm
 Minimum measurable internal diameter: 1150 mm
 Maximum measurable external diameter: 3000 mm (recommended*)
 Maximum measurable internal diameter: 3000 mm (recommended*)

* The maximum size could theoretically be much larger. The accuracy obtainable with the three-point measurement principle is influenced by the ratio between the measured diameter and the distance of the three points considered. The maximum recommended dimension is the one to be considered for a maximum error of +/- 0.1% of error on the measuring range.

Tools and accessories for outside / inside diameters and radii



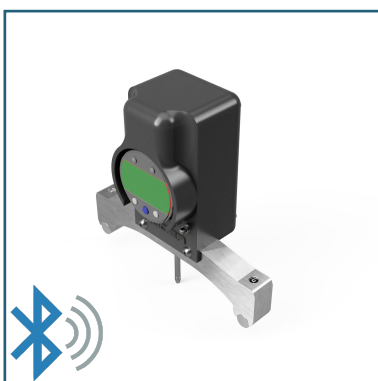
DIACHECK-CT series measuring instrument for radii and diameters with roller support and 80 mm center distance - Bluetooth model

ITEM : 10-06-68
PRODUCT CODE : DIACHECK-CT-80C-BLT

Measuring instrument composed of :

- DIACHECK-ST-25 electronic controller with digital comparator
- Support base with rollers (suitable for both internal and external measurements) with 80 mm center distance between the rollers

Minimum measurable external diameter: 110 mm
 Minimum measurable internal diameter: 180 mm
 Maximum measurable external diameter: 500 mm (recommended*)
 Maximum measurable internal diameter: 500 mm (recommended*)



DIACHECK-CT series measuring instrument for radii and diameters with roller support and 160 mm center distance - Bluetooth model

ITEM : 10-06-69
PRODUCT CODE : DIACHECK-CT-160C-BLT

Measuring instrument composed of :

- DIACHECK-ST-25 electronic controller with digital comparator
- Support base with rollers (suitable for both internal and external measurements) with 160 mm center distance between the rollers

Minimum measurable external diameter: 520 mm
 Minimum measurable internal diameter: 520 mm
 Maximum measurable external diameter: 1500 mm (recommended*)
 Maximum measurable internal diameter: 1500 mm (recommended*)



DIACHECK-CT series measuring instrument for radii and diameters with roller support and 240 mm center distance - Bluetooth model

ITEM : 10-06-70
PRODUCT CODE : DIACHECK-CT-240C-BLT

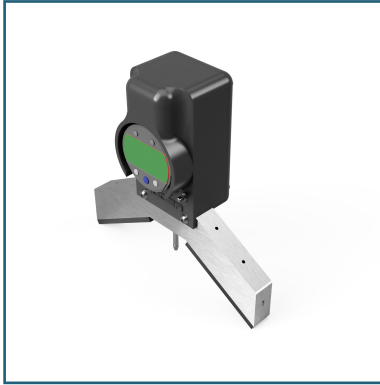
Measuring instrument composed of :

- DIACHECK-ST-25 electronic controller with digital comparator
- Support base with rollers (suitable for both internal and external measurements) with 240 mm center distance between the rollers

Minimum measurable external diameter: 1150 mm
 Minimum measurable internal diameter: 1150 mm
 Maximum measurable external diameter: 3000 mm (recommended*)
 Maximum measurable internal diameter: 3000 mm (recommended*)

* The maximum size could theoretically be much larger. The accuracy obtainable with the three-point measurement principle is influenced by the ratio between the measured diameter and the distance of the three points considered. The maximum recommended dimension is the one to be considered for a maximum error of +/- 0.1% of error on the measuring range.

Tools and accessories for radii and outside diameters



Measuring instrument for external diameters and radii DIACHECK-CT series with 200 mm plate support

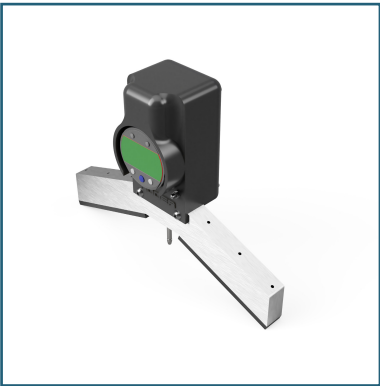
ITEM : 10-07-22
PRODUCT CODE : DIACHECK-CT-200P

Measuring instrument composed of :

- DIACHECK-ST-25 electronic controller
- Support base with plates (suitable only for external measurements) - support width 200 mm

Minimum measurable external diameter: 160 mm
Maximum measurable external diameter: 400 mm

This configuration cannot be used for measuring internal diameters



Measuring instrument for external diameters and radii DIACHECK-CT series with 260 mm plate support

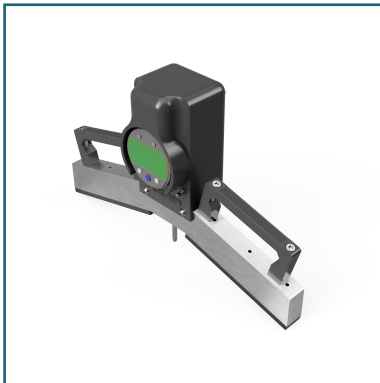
ITEM : 10-07-23
PRODUCT CODE : DIACHECK-CT-260P

Measuring instrument composed of :

- DIACHECK-ST-25 electronic controller
- Support base with plates (suitable only for external measurements) - support width 260 mm

Minimum measurable external diameter: 180 mm
Maximum measurable external diameter: 750 mm

This configuration cannot be used for measuring internal diameters



Measuring instrument for external diameters and radii DIACHECK-CT series with 300 mm plate support

ITEM : 10-07-24
PRODUCT CODE : DIACHECK-CT-300P

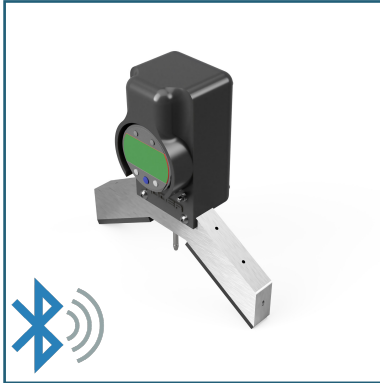
Measuring instrument composed of :

- DIACHECK-ST-25 electronic controller
- Support base with plates (suitable only for external measurements) - support width 300 mm

Minimum measurable external diameter: 320 mm
Maximum measurable external diameter: 1150 mm

This configuration cannot be used for measuring internal diameters

Tools and accessories for radii and outside diameters



Measuring instrument for external diameters and radii DIACHECK-CT series with 200 mm plate support - Bluetooth model

ITEM : 10-07-28

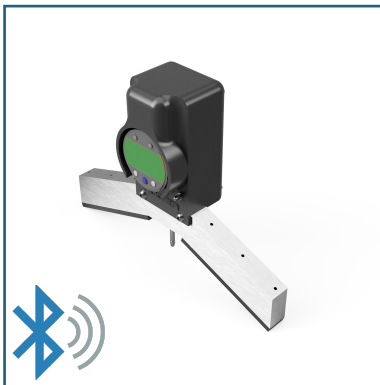
PRODUCT CODE : DIACHECK-CT-200P-BLT

Measuring instrument composed of :

- DIACHECK-ST-25 electronic controller
- Support base with plates (suitable only for external measurements) - support width 200 mm

Minimum measurable external diameter: 160 mm
Maximum measurable external diameter: 400 mm

This configuration cannot be used for measuring internal diameters



Measuring instrument for external diameters and radii DIACHECK-CT series with 260 mm plate support - Bluetooth model

ITEM : 10-07-29

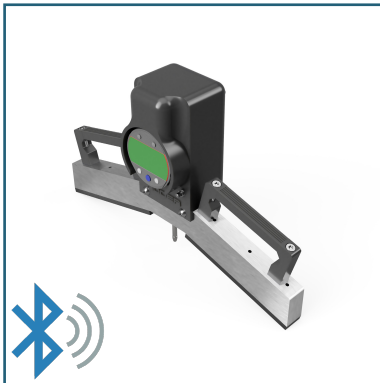
PRODUCT CODE : DIACHECK-CT-260P-BLT

Measuring instrument composed of :

- DIACHECK-ST-25 electronic controller
- Support base with plates (suitable only for external measurements) - support width 260 mm

Minimum measurable external diameter: 180 mm
Maximum measurable external diameter: 750 mm

This configuration cannot be used for measuring internal diameters



Measuring instrument for external diameters and radii DIACHECK-CT series with 300 mm plate support - Bluetooth model

ITEM : 10-07-30

PRODUCT CODE : DIACHECK-CT-300P-BLT

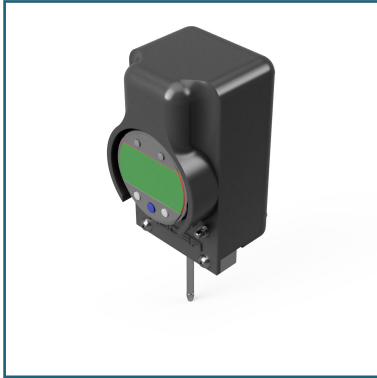
Measuring instrument composed of :

- DIACHECK-ST-25 electronic controller
- Support base with plates (suitable only for external measurements) - support width 300 mm

Minimum measurable external diameter: 320 mm
Maximum measurable external diameter: 1150 mm

This configuration cannot be used for measuring internal diameters

Spare parts and accessories



Electronic controller with digital comparator (without measurement support)

ITEM : 10-07-31
PRODUCT CODE : DIACHECK-CT-25S

Electronic controller with digital comparator to be combined with the support with rollers or with plates



Electronic controller with digital comparator (without measurement support) - Bluetooth data transmission model

ITEM : 10-07-34
PRODUCT CODE : DIACHECK-CT-25S-BLT

Electronic controller with digital comparator to be combined with the support with rollers or with plates
Integrated Bluetooth interface.



Bow with roller support, wheelbase 80 mm

ITEM : 10-07-35
PRODUCT CODE : DIACHECK-CT-C80

Bow with cylindrical roller support with 80 mm center distance

*The indicated price is the list price on which the discount reserved for you is applied. Contact our sales office for information and details.



Bow with roller support, wheelbase 160 mm

ITEM : 10-07-36
PRODUCT CODE : DIACHECK-CT-C160

Bow with cylindrical roller support with 160 mm center distance

*The indicated price is the list price on which the discount reserved for you is applied. Contact our sales office for information and details.

Spare parts and accessories



Bow with roller support, wheelbase 240 mm

ITEM : 10-07-37
 PRODUCT CODE : DIACHECK-CT-C240

Bow with cylindrical roller support with 240 mm center distance

PRICE *

370,00*



Bow with plate support 200 mm

ITEM : 10-07-38
 PRODUCT CODE : DIACHECK-CT-SP-P200

Bow with plate support with maximum size 200 mm

Minimum measurable external diameter: 160 mm
 Maximum measurable external diameter: 400 mm

This configuration cannot be used for measuring internal diameters

PRICE *

370,00*



Bow with plate support 260 mm

ITEM : 10-07-39
 PRODUCT CODE : DIACHECK-CT-SP-P260

Bow with plate support with maximum size 260 mm

Minimum measurable external diameter: 180 mm
 Maximum measurable external diameter: 750 mm

This configuration cannot be used for measuring internal diameters

PRICE *

370,00*



Bow with plate support 300 mm

ITEM : 10-07-40
 PRODUCT CODE : DIACHECK-CT-SP-P300

Bow with plate support with maximum size 300 mm

Minimum measurable external diameter: 320 mm
 Maximum measurable external diameter: 1150 mm

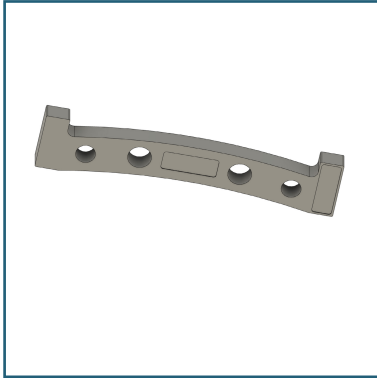
This configuration cannot be used for measuring internal diameters

PRICE *

370,00*

*The indicated price is the list price on which the discount reserved for you is applied. Contact our sales office for information and details.

Spare parts and accessories



Calibration bows for DIACHECK-CT with roller support

Calibration bow with double verification radius (external and internal). Suitable both for instrument calibration and for periodic verification of the correct measurement

ITEM	PRODUCT CODE	RADIUS
00-00-00	DIACHECK-CT-CALIE-100	100 mm
00-00-00	DIACHECK-CT-CALIE-200	200 mm
00-00-00	DIACHECK-CT-CALIE-300	300 mm
00-00-00	DIACHECK-CT-CALIE-400	400 mm
00-00-00	DIACHECK-CT-CALIE-500	500 mm
00-00-00	DIACHECK-CT-CALIE-600	600 mm
00-00-00	DIACHECK-CT-CALIE-700	700 mm
00-00-00	DIACHECK-CT-CALIE-800	800 mm
00-00-00	DIACHECK-CT-CALIE-900	900 mm
00-00-00	DIACHECK-CT-CALIE-1000	1000 mm
00-00-00	DIACHECK-CT-CALIE-1200	1200 mm
00-00-00	DIACHECK-CT-CALIE-1400	1400 mm
00-00-00	DIACHECK-CT-CALIE-1600	1600 mm
00-00-00	DIACHECK-CT-CALIE-1800	1800 mm
00-00-00	DIACHECK-CT-CALIE-2000	2000 mm
00-00-00	DIACHECK-CT-CALIE-2500	2500 mm
00-00-00	DIACHECK-CT-CALIE-3000	3000 mm
00-00-00	DIACHECK-CT-CALIE-3500	3500 mm
00-00-00	DIACHECK-CT-CALIE-4000	4000 mm
00-00-00	DIACHECK-CT-CALIE-4500	4500 mm
00-00-00	DIACHECK-CT-CALIE-5000	5000 mm
00-00-00	DIACHECK-CT-CALIE-6000	6000 mm
00-00-00	DIACHECK-CT-CALIE-7000	7000 mm
00-00-00	DIACHECK-CT-CALIE-8000	8000 mm
00-00-00	DIACHECK-CT-CALIE-9000	9000 mm
00-00-00	DIACHECK-CT-CALIE-10000	10000 mm

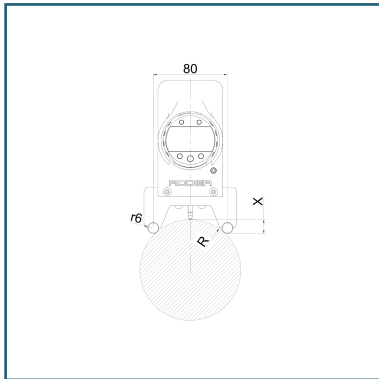
Spare parts and accessories



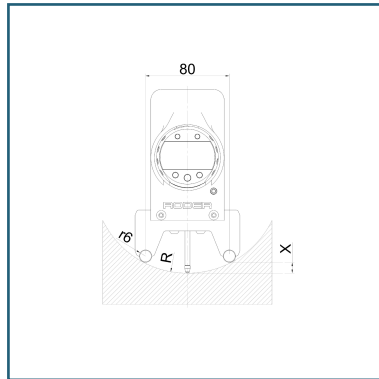
Calibration bows for DIACHECK-CT with plate support

Calibration bow with single verification radius (only external). Suitable both for instrument calibration and for periodic verification of the correct measurement

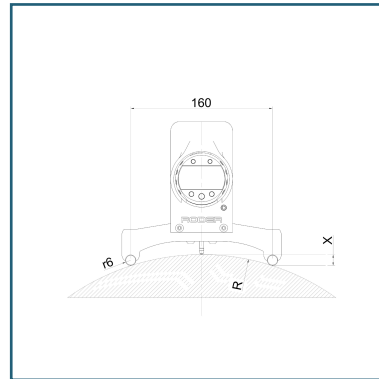
ITEM	PRODUCT CODE	RADIUS
00-00-00	DIACHECK-CT-CALE-100	100 mm
00-00-00	DIACHECK-CT-CALE-200	200 mm
00-00-00	DIACHECK-CT-CALE-300	300 mm
00-00-00	DIACHECK-CT-CALE-400	400 mm
00-00-00	DIACHECK-CT-CALE-500	500 mm
00-00-00	DIACHECK-CT-CALE-600	600 mm
00-00-00	DIACHECK-CT-CALE-700	700 mm
00-00-00	DIACHECK-CT-CALE-800	800 mm
00-00-00	DIACHECK-CT-CALE-900	900 mm
00-00-00	DIACHECK-CT-CALE-1000	1000 mm
00-00-00	DIACHECK-CT-CALE-1200	1200 mm
00-00-00	DIACHECK-CT-CALE-1400	1400 mm
00-00-00	DIACHECK-CT-CALE-1600	1600 mm
00-00-00	DIACHECK-CT-CALE-1800	1800 mm
00-00-00	DIACHECK-CT-CALE-2000	2000 mm
00-00-00	DIACHECK-CT-CALE-2500	2500 mm
00-00-00	DIACHECK-CT-CALE-3000	3000 mm
00-00-00	DIACHECK-CT-CALE-3500	3500 mm
00-00-00	DIACHECK-CT-CALE-4000	4000 mm
00-00-00	DIACHECK-CT-CALE-4500	4500 mm
00-00-00	DIACHECK-CT-CALE-5000	5000 mm
00-00-00	DIACHECK-CT-CALE-6000	6000 mm
00-00-00	DIACHECK-CT-CALE-7000	7000 mm
00-00-00	DIACHECK-CT-CALE-8000	8000 mm
00-00-00	DIACHECK-CT-CALE-9000	9000 mm
00-00-00	DIACHECK-CT-CALE-10000	10000 mm



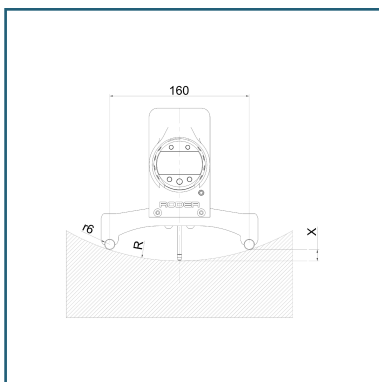
DIACHECK-CT-80C for measuring external radius



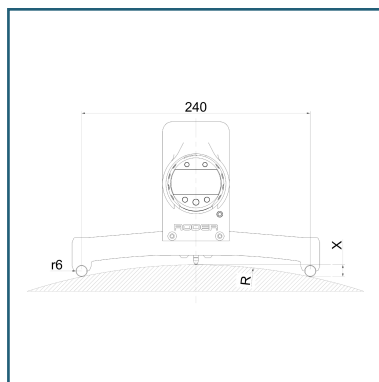
DIACHECK-CT-80C for measuring internal radius



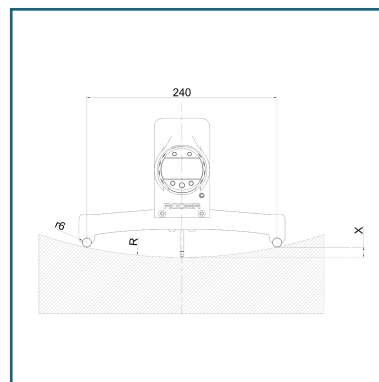
DIACHECK-CT-160C for measuring external radius



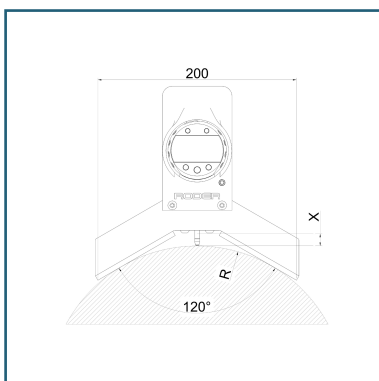
DIACHECK-CT-160C for measuring internal radius



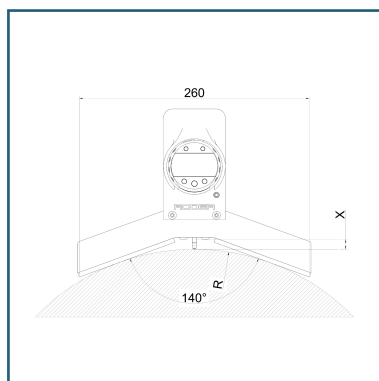
DIACHECK-CT-240C for measuring external radius



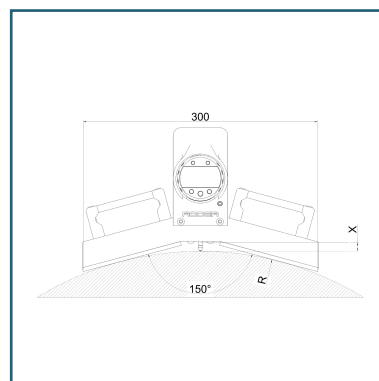
DIACHECK-CT-240C for measuring internal radius



DIACHECK-CT-200P for measuring external radius



DIACHECK-CT-260P for measuring external radius



DIACHECK-CT-300P for measuring external radius

Important notes and copyright

The technical data contained in this catalog are not binding for RODER SRL and can be modified without notice for production needs or for improvement.

The information contained herein is provided "as is" and RODER SRL makes no warranties, representations or guarantees as to its accuracy, information, product characteristics, availability, functionality or suitability of its products for a particular purpose, nor does RODER SRL assume any liability arising out of the application or use of any product or device, and in particular disclaims any and all liability, including including, without limitation, special, consequential, or incidental damages.

The buyer is responsible for the use of RODER SRL products including compliance with all laws, regulations and safety requirements or standards, regardless of any application support or information provided by RODER SRL.

The "characteristic" parameters that may be provided in the data sheets and/or specifications can vary, and vary according to the different applications. The actual performance of the products in the RODER SRL documentation may vary over time. All operating parameters must be analyzed and validated for each application by the customer's technical experts.

RODER SRL products are not designed, intended or authorized for use as critical components in life support systems.

This literature is subject to all applicable copyright laws and may not be reproduced or resold in any way. Any reproduction of this document without prior authorization is prohibited.

Images, photos, references and trademarks contained in this document, if not owned by RODER SRL, are the legitimate owners.

DOC REF0005 - Last update : 20 May 2023